

Maintenance Guide

Phantas S1

Technical Service Support

Keep Exploring Keep Innovating

Maintenance Guide



Gausium is the only commercial service robot company in cleaning industry with ISO9001 international certification, China robot CR certification, United States UL safety certification and Europe CE safety certification. Up to now, Gausium has provided 200 million kilometers' cleaning services for more than 2,000 customers in over 40 countries and regions around the world. Gausium is one of the companies with the most outstanding implementation capability in the field of commercial mobile robot and autonomous driving.

Document History

| Edition | Contents | Reviser | Date | Approved | Approver | Approval date |
|----------|--|--------------|------------|----------|----------|---------------|
| B9-3_1.0 | First Release | Ming Chen | 2022/8/6 | Yes | | |
| B9-3_1.1 | Updating 9-3 and replacing some pictures | Shaokai Dong | 2022/9/13 | Yes | | |
| B9-3_1.2 | Typesetting & embellishing | Chaopeng Sun | 2022/10/14 | Yes | | |
| B9-3_1.3 | Adding pictures of cleaning tools | Shaokai Dong | 2022/10/28 | Yes | | |
| B9-3_1.4 | Replacing pictures following UI changes | Chaopeng Sun | 2022/11/5 | Yes | | |

Content

01-Clean the Exterior

02-Clean Dust Tank

03-Clean Wastewater

04-Clean/Replace Air Filter

05-Clean/Replace Side Brush

06-Clean/Replace Roller Brush Assembly

07-Clean/Replace Dust Collector

08-Clean Squeegee

09-Clean/Replace Rubber Strips

01-Clean the Exterior

Phantas S1

- (1) Clean the exterior: use soft cloth to wipe the shell, screen and top lid.
- (2) Clean the sensors: use **soft, dry, lint-free** cloth to gently wipe the laser, camera and other sensors.



02-Clean Dust Tank

Phantas S1

1. Press "OPEN" to open the top lid. Take out the dust tank.

2. Take out dust bag .

Notice: lift the white sheet up to seal the dust bag to prevent dust from spraying out.

3. Pull the sealing strip out and empty the trash.

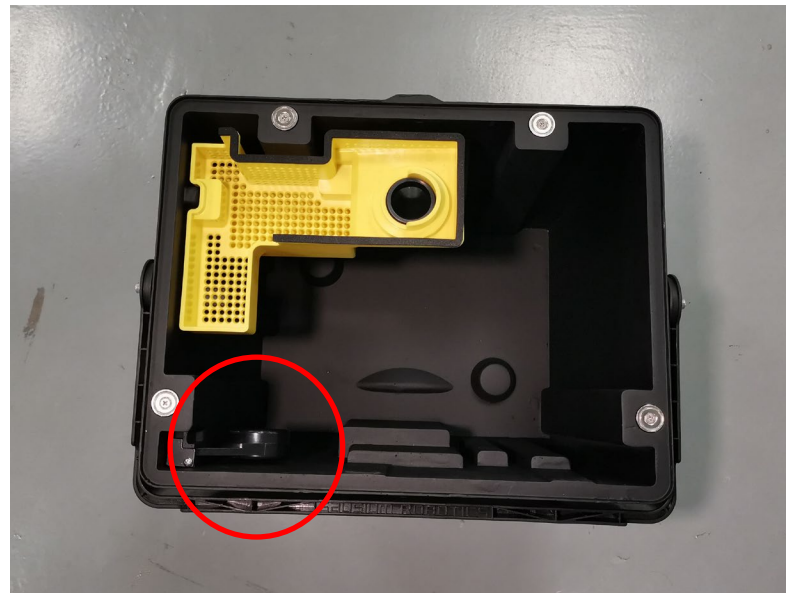


03-Clean Wastewater Tank

Phantas S1

- (1) Press **"OPEN"** to open the top lid. Take out the wastewater tank.
- (2) Open the tank and clean the float ball. Check if the float ball can move smoothly by hand;
- (3) Take out and clean the filter basket. Rinse the tank with clean water.

Note: you can use bristle brush to clean the dirty.



04-Clean/Replace Air Filter

Phantas S1

1. Open the lid to find the air filter.



2. Press the clips inward, and open the air filter cover;



3. Take out the filter, clean it or replace with a new one.



05-Clean/Replace Side Brush

Phantas S1

1. Open the side window



2. Grab the rubber boot and pull down to remove the side brush.

Do not hold the bristles.



3. Clean side brush with wipes or replace it.

Align the magnetic catch and push the side brush up to install it.



06-Clean/Replace Roller Brush Assembly

Phantas S1

1. Open the side window.



2. Press the button and take the roller brush assembly out.



3. Take front and rear brush off the assembly and clean them with bristle brush or replace them.



07-Clean/Replace Dust Collector

Phantas S1

1. Open the side window.



2. Press the button and take the dust collector out.



3. Empty and clean or replace it.



08-Daily cleaning-Squeegee

Phantas S1

1. Use wet wipes to clean the surface of inner and outer strips.



2. Clean the gap between the inner and outer strips.



3. Use wet wipes to clean the exterior.



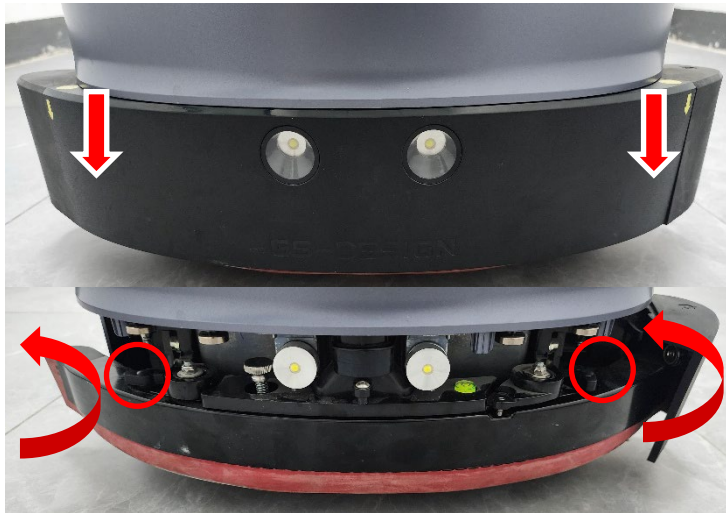
09-Weekly cleaning-Squeegee

Phantas S1

- (1) Disassemble: Press the squeegee protector and remove it; Rotate the bolt on the assembly counterclockwise, and remove the squeegee assembly;
- (2) Remove: Press the silver button on the top and keep it still, and remove the rubber strip. After removing the rubber strip, clean it or replace it;
- (3) Clean: Wash the suction port of the squeegee with water to ensure that there is no lint or garbage clogging the suction port.

Note: (1) Press the silver button while installing the inner rubber strip first, then install the outer rubber strip. Warm reminder: No problem with upside down.

(2) Shake the rubber left and right to ensure it is installed in place, with symmetrical lengths on the left and right and with no looseness. Check the outer rubber strip in the same way.



Consumables Replacement Cycle (Recommended)

| Classification | Component | Cleaning and Maintenance Frequency | Replacement Frequency (either condition) |
|---------------------|--------------------|------------------------------------|--|
| Class A consumables | Front roller brush | 1 time/day | 300h/3 months |
| | Rear roller brush | 1 time/day | |
| | Rear roller cloth | 1 time/day | |
| | Side brush | 1 time/day | |
| | Rubber strip | 1 time/day | |
| | Sealed dust bag | 1 time/3days | 600h/6 months |
| | HEPA | 1 time/3days | |
| | Water pump filter | / | |

Let Gausium robots serve the world!

